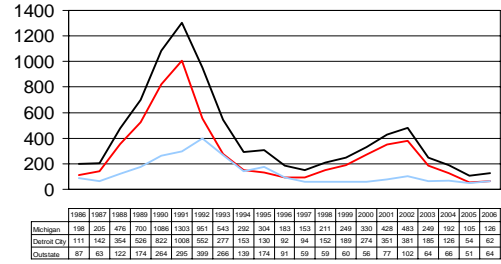


Healthy Living, Healthy Lifestyles

Kathryn Macomber, MPH
 April 4, 2007
 Genesee County Public Health Week
 Conference

P&S Syphilis by Region 1986-2006

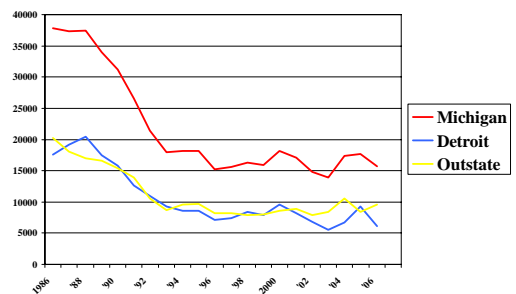


Source: MDCH

Five Highest Counties-P&S (by Counts in 2006)

- Detroit (64)
- Wayne (12)
- Oakland (9)
- Kent (8)
- Ingham (7)
- Genesee (4)
 - In 2005, the order was Detroit (54), Wayne (11), Oakland (10), Kent (6), Ingham (6), Washtenaw (5)

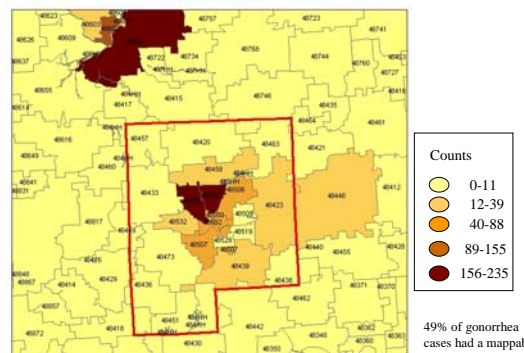
Reported Michigan Gonorrhea Cases by Region 1986-2006



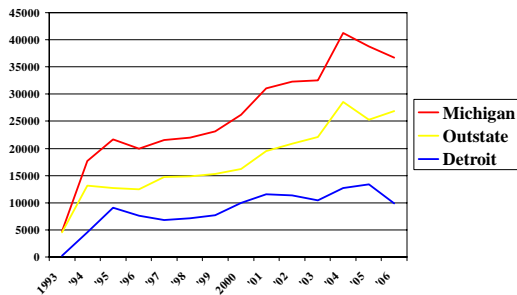
Five Highest Counties-GC (by rate in 2006)

- Detroit (640/100,000)
- Genesee (371/100,000)
- Muskegon (364/100,000)
- Berrien (265/100,000)
- Kalamazoo (239/100,000)
 - In 2005 the order was Detroit (879), Muskegon (363), Genesee (364), Berrien (263), Calhoun (260)

2005 Genesee County Gonorrhea Cases By Zip Code



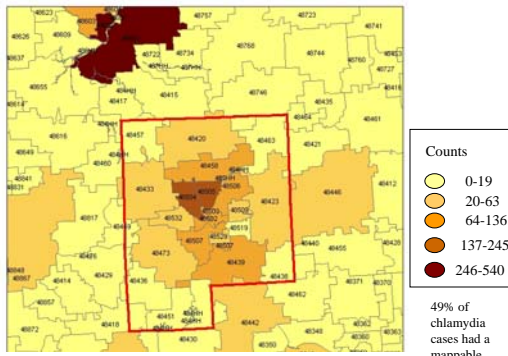
Reported Michigan Chlamydia Cases by Region 1993-2006



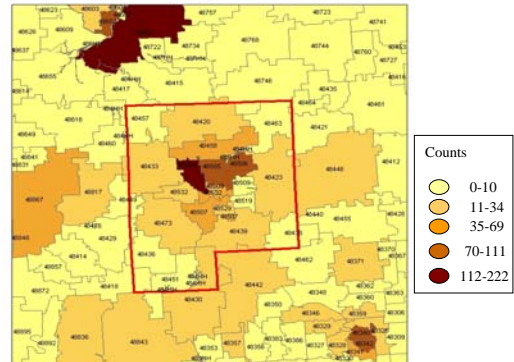
Five Highest Counties-CT (by rate in 2006)

- Detroit (1,041/100,000)
- Muskegon (701/100,000)
- Genesee (672/100,000)
- Ingham (642/100,000)
- Kent (597/100,000)
 - In 2005 the order was Detroit (1,411), Genesee (615), Ingham (572), Saginaw (561), Calhoun (521)

2005 Genesee County Chlamydia Cases By Zip Code



2005 Genesee County Teen Births (Age 15-19) By Zip Code



Epidemiology of STDs in Genesee County-Race

	White	Black	Hispanic	Other	Unk
Gonorrhea	10%	38%	1%	1%	50%
Chlamydia	14%	31%	1%	2%	52%
P&S Syphilis	0%	100%	0%	0%	0%

STD Cases in Genesee County are more likely to be of Unknown Race and less likely to be White

Epidemiology of STDs in Genesee County-Sex

	Male	Female	Unknown
Gonorrhea	40%	60%	0%
Chlamydia	24%	75%	1%
P&S Syphilis	75%	25%	0%

STD Cases in Genesee County are more likely to be of Female

Epidemiology of STDs in Genesee County-Age

	0-19	20-29	30-39	40-55	56+
Gonorrhea	31%	45%	16%	7%	1%
Chlamydia	43%	45%	9%	2%	1%
P&S Syphilis	0%	0%	0%	75%	25%

P&S Cases in Genesee County are older than the general P&S
age distribution statewide

Questions or Comments?
Thank you for listening....

Macomberk@michigan.gov