

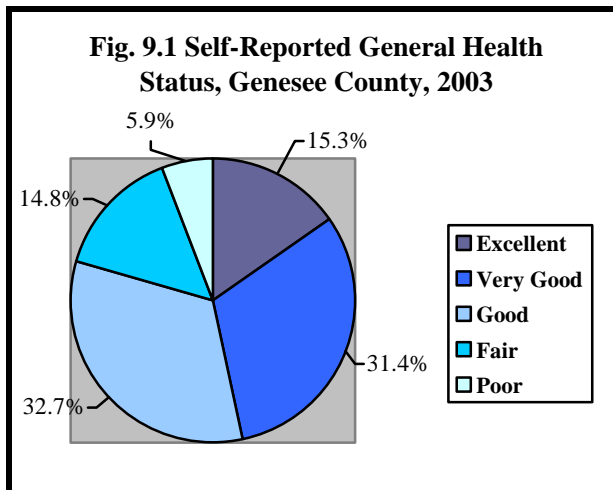
CHAPTER 9:

Death, Illness, and Injury

Health status in a community is often presented according to indicators of death (mortality) and disease or injury (morbidity). This chapter presents the ten leading causes of death in Genesee County in 2003, as well as more detailed information on cancer and diabetes. Racial disparities in mortality and morbidity for many of the leading causes of death exist and are presented here. Age-adjusted rates are used to eliminate the effect of age differences in the population on the rate of disease. All age-adjusted rates shown are adjusted to the standardized U.S. population 2000, unless otherwise noted.

GENERAL HEALTH STATUS

- ◆ Self-reported health status is a strong measure of overall health status and is associated with physical health, use of health services, and mortality¹.
- ◆ Whites were more likely to report better general health status than African Americans.
- ◆ Over 80% (81.6) of Out County residents rated their general health as *Excellent*, *Very Good*, or *Good* compared to nearly three-quarters (73.4%) of City of Flint residents.
- ◆ Males reported better health status than females.
- ◆ Although the majority of Genesee County residents (75.4%) reported that poor physical or mental health status did not keep them from doing their usual activities in the past month, Flint residents reported significantly more days where their physical or mental health status did keep them from their usual activities than Out County residents.



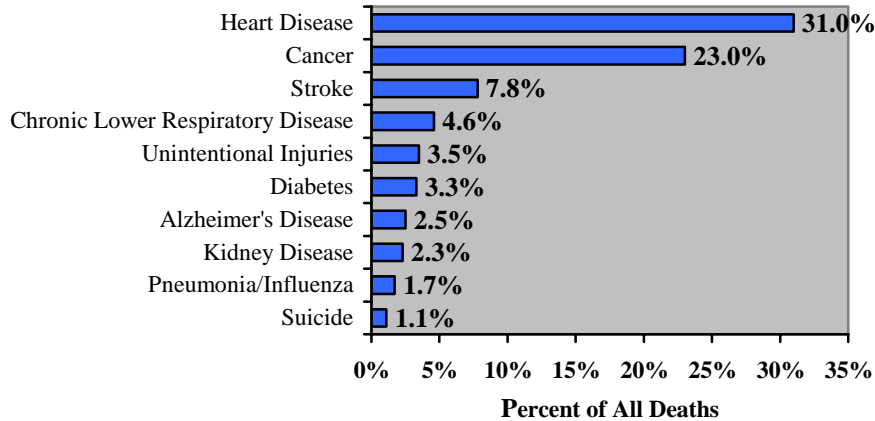
Source: Speak to Your Health! Community Survey, 2003, Prevention Research Center of Michigan

¹ CDC, Council of State and Territorial Epidemiologists, and the Association of State and Territorial Chronic Disease Program Directors. Indicators for chronic disease surveillance. (2004). MMWR, 53 (RR-11), 1-6.

LEADING CAUSES OF DEATH

- ◆ In 2003, Heart Disease was the leading cause of death for Genesee County residents of all race/ethnicities. Cancer was the second leading cause of death followed by Stroke, Chronic Lower Respiratory Disease, and Unintentional Injuries.

Fig. 9.2 Ten Leading Causes of Death for Genesee County Residents, 2003



Source: 2003 Michigan Resident Death File, Vital Records & Health Data Development Section, Michigan Department of Community Health.

- ◆ Figure 9.3 shows that in Genesee County, with the exception of Stroke, men generally die from the ten leading causes at a higher rate than women. There are also marked differences in death rates between African Americans and Whites for these causes of death.

Fig. 9.3 Age-Adjusted Death Rates for Ten Leading Causes by Race and Sex, Genesee County Residents, 2003 (per 100,000 population)

| Cause of Death | All Races | White | | African American | | | |
|-----------------------------------|-----------|-------|---------|------------------|---------|---------|--------|
| | Overall | Total | Male | Female | Total | Male | Female |
| Heart Disease | 286.5 | 273.1 | 347.6 | 222.2 | 353.2 | 420.9 | 299.2 |
| Cancer | 206.0 | 207.4 | 240.7 | 188.3 | 201.7 | 228.1 | 185.1 |
| Stroke | 73.8 | 66.8 | 64.9 | 66.2 | 109.5 | 102.5 | 110.2 |
| Chronic Lower Respiratory Disease | 42.0 | 44.8 | 55.9 | 39.6 | * | * | * |
| Unintentional Injuries | 31.5 | 30.1 | 43.5 | 19.1 | 40.2 | 60.1 | * |
| Diabetes Mellitus | 29.5 | 25.5 | 37.3 | 17.4 | 47.2 | * | * |
| Alzheimer's Disease | 24.5 | 25.8 | * | 31.9 | * | * | * |
| Pneumonia/Influenza | 15.9 | 15.3 | 21.3 | 12.4 | * | * | * |
| Kidney Disease | 20.7 | 18.5 | 23.6 | 15.8 | 30.0 | * | * |
| Suicide | 9.8 | 9.1 | 12.4 | * | * | * | * |
| All Other Causes | 174.6 | 154.9 | 186.5 | 127.5 | 261.3 | 283.4 | 239.4 |
| Total | 914.9 | 871.3 | 1,046.9 | 746.7 | 1,111.2 | 1,254.8 | 990.1 |

*Number of cases is too small to calculate a reliable rate. Source: Michigan Department of Community Health

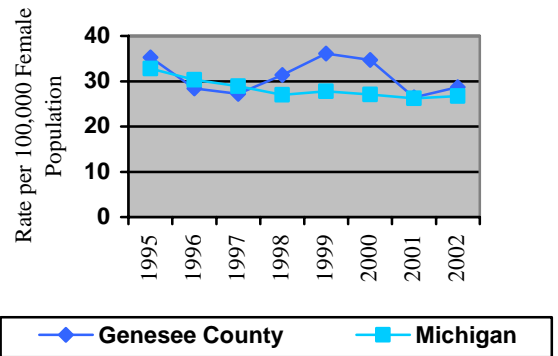
CANCER

Cancer was the second leading cause of death for Genesee County residents in 2002 and 2003. The most prevalent types of cancer include breast cancer, lung cancer, colorectal cancer, and prostate cancer. In Genesee County in 2002, lung cancer accounted for more deaths (262) than breast, colorectal, and prostate cancer combined (211). In the United States, tobacco use remains the number one cause of lung cancer.

Breast Cancer

- ◆ In 2002, the age-adjusted death rate from invasive breast cancer was 28.7 per 100,000 female population in Genesee County compared to 26.7 per 100,000 female population in Michigan

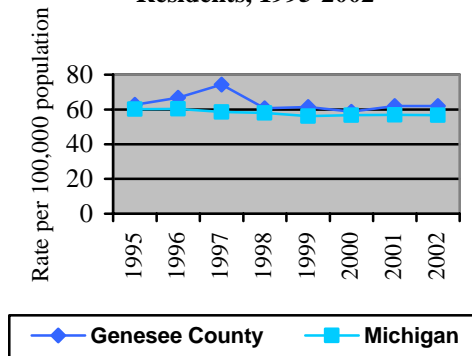
Fig. 9.4 Age-Adjusted Invasive Breast Cancer Mortality Rates, Female Residents, Genesee County and Michigan, 1995-2002



Source: 1985-2002 Michigan Resident Death Files, Vital Records & Health Data Development Section, Michigan Department of Community Health

Lung Cancer

Fig. 9.5 Age-Adjusted Invasive Lung Cancer Mortality Rates, Genesee County and Michigan Residents, 1995-2002



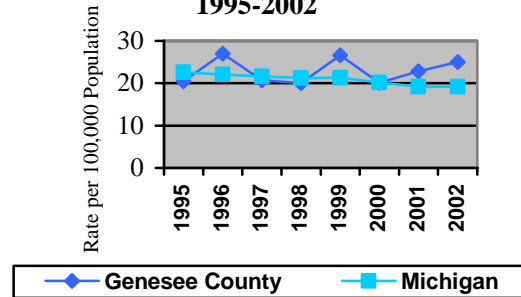
- ◆ In 2002, the age-adjusted death rate for invasive lung cancer was 61.9 per 100,000 population in Genesee County and 56.6 per 100,000 population in Michigan.

Source: 1985-2002 Michigan Resident Death Files, Vital Records & Health Data Development Section, Michigan Department of Community Health

Colorectal Cancer

- ◆ In Genesee County, the age-adjusted death rate for colorectal cancer was 25.0 per 100,000 population in 2002. Michigan's rate was 19.2 per 100,000 population.

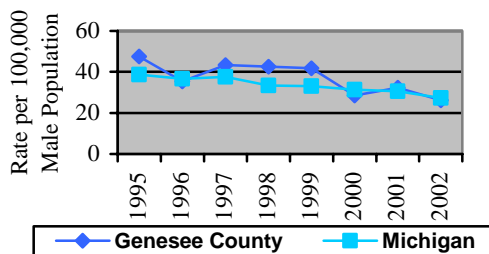
Fig. 9.6 Age-Adjusted Invasive Colorectal Cancer Rates, Genesee County and Michigan, 1995-2002



Source: 1985-2002 Michigan Resident Death Files, Vital Records & Health Data Development Section, Michigan Department of Community Health

Prostate Cancer

Fig. 9.7 Age-Adjusted Invasive Prostate Cancer Mortality Rates, Genesee County and Michigan, 1995-2002



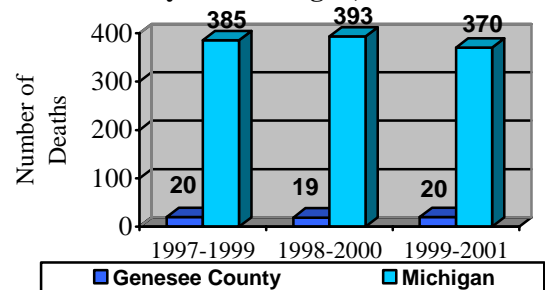
Source: 1985-2002 Michigan Resident Death Files, Vital Records & Health Data Development Section, Michigan Department of Community Health

- ◆ In 2002, the age-adjusted death rate for prostate cancer was 26.2 per 100,000 male population in Genesee County and 27.2 per 100,000 male population in Michigan.

Cervical Cancer

- ◆ In Genesee County from 1999-2001 the age-adjusted death rate for cervical cancer was 2.8 per 100,000 female population. The age-adjusted death rate in Michigan for the same time period was 2.3 per 100,000 female population.

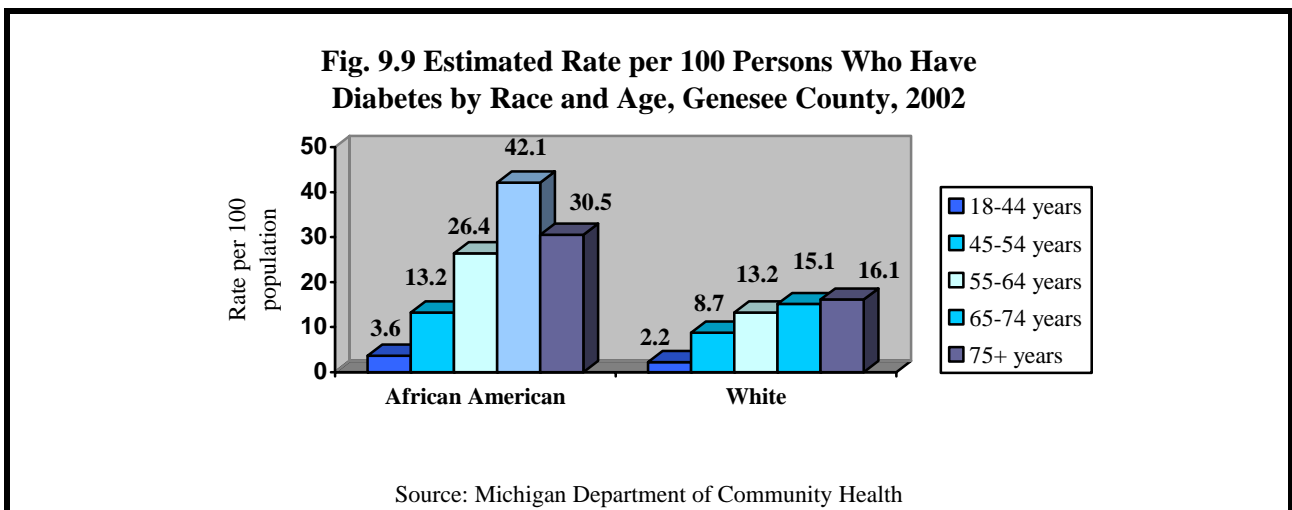
Fig. 9.8 Numbers of Deaths Due to Invasive Cervical Cancer, Genesee County and Michigan, 1997-2001



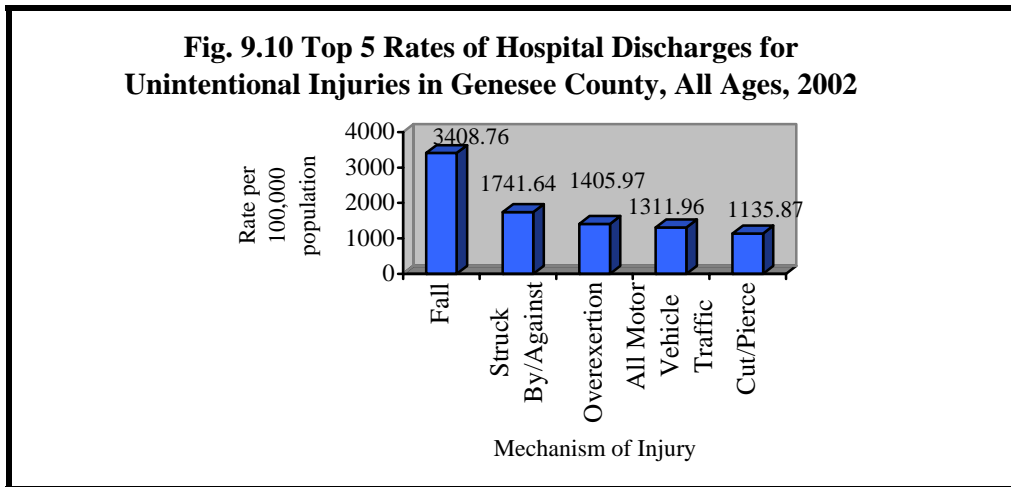
Source: 1997-2001 Michigan Resident Death Files, Michigan Department of Community Health, Vital Records and Health Data Development Section.

DIABETES

- ◆ In 2002 there were an estimated 24,930 adults over the age of 18 years who have been diagnosed with diabetes in Genesee County, including 890 Hispanics/Latinos. The overall rate of diabetes in adults in Genesee County is estimated to be 7.4 per 100 people.
- ◆ Figure 9.9 shows that in Genesee County, African Americans 18 years and older have higher rates of diabetes than Whites in the same age group.
- ◆ In 2004, the U.S. Department of Health and Human Services estimated that there are an additional 10,010 Genesee County adults with undiagnosed diabetes.



UNINTENTIONAL INJURIES



Source: Flint's Youth Violence Prevention Center, 2004

- ◆ Figure 9.10 shows that in 2002, falls accounted for the highest number and highest proportion of hospital discharges for unintentional injuries in Genesee County.
- ◆ In 2003, unintentional injury deaths accounted for 136, or 23%, of all medical examiner cases. As shown in Figure 9.11, motor vehicle accidents contributed to the majority (52%) of deaths due to unintentional injuries.
- ◆ More males (91) died as a result of unintentional injuries than females (45). Whites accounted for 76.5% of unintentional injury deaths in 2003, while 22.8% of unintentional injury deaths were to African Americans.

